

Manufacturer:
 PENDOCK, Halesfield 19, Telford, Shropshire, TF7 4QT.
T: 01952 580590 **E:** sales@pendock.co.uk **W:** www.pendock.co.uk

Product Range: **PENDOCK PROFILES**
 Pendock Profiles CASINGS FOR SERVICES

Product Reference:
 CH 100x200x100

Product Description:
 The CH range, with a double 90 degree return, is ideal for use at mid-wall vertical or horizontal locations including bulkheads, to hide cables or pipework. Supplied in pre-formed plywood with white craft paper finish as standard or a wide range of High Pressure Laminate (HPL) finishes upon request.

Size:
 100mm x 200 x 100mm channel section with two 90 degree angles.

Length:
 2500mm & 3000mm lengths available.

Thickness:
 8mm

Profile Angle:
 90 degrees

Internal Working Space (approx):
 84mm x 184mm overall

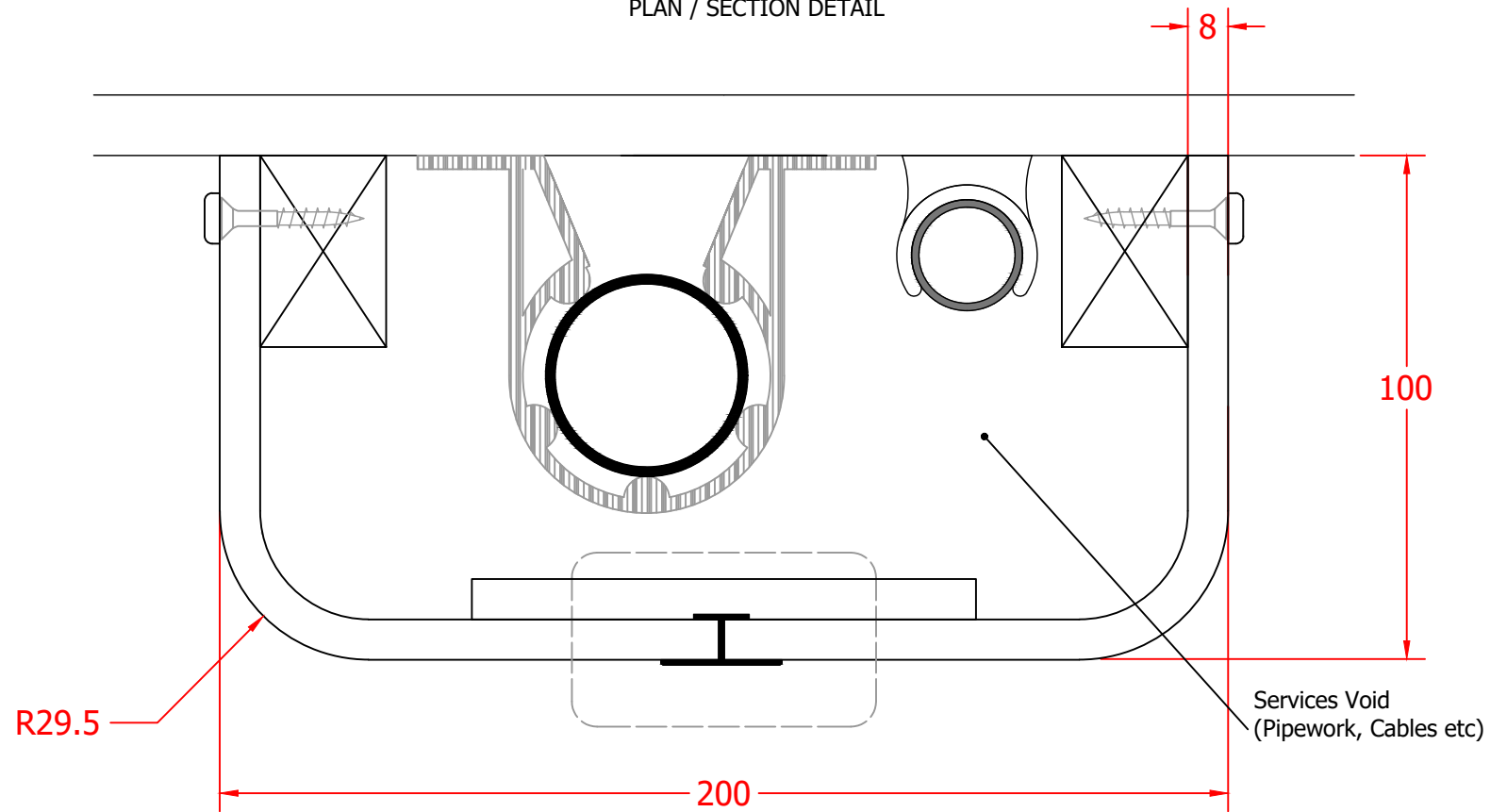
Finish / Colour:
 White Craft Paper / High Pressure Laminate (HPL)

Jointing:
 J8 'H' Joint in white (standard detail); J3 Aluminium Feature Joint; J4 Laminated Joint;

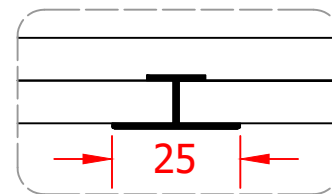
- Accessories:**
 Screws & White Caps
 Internal Corners
 External Corners
 Stop Ends
 Butt Joint Covers
 Battens
 Button Vents (white)
 Access Hatches
 Edge Shadow Gaps

Drawing References:
 CH 100x200x100

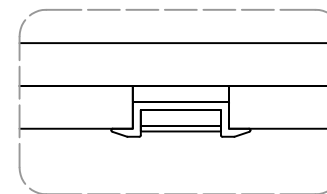
PLAN / SECTION DETAIL



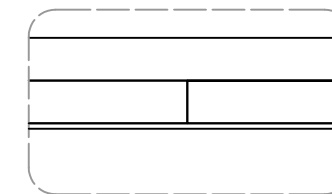
JOINT OPTIONS



J8 'H' Joint in white (standard detail)

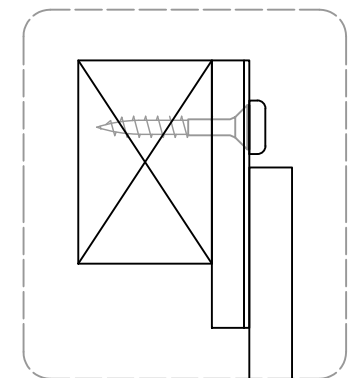


J3 Aluminium Feature Joint with insert to match or contrast with casing finish



J4 Laminated Joint

EDGE S/GAP OPTION



Edge Shadow Gap

PRODUCT RANGE:	PENDOCK PROFILES		REV:	DATE:	REVISION:	INIT:	APPROVED BY:	
PRODUCT REF:	CH100x200x100						COMPANY:	
DRAWING No:	CH100x200x100						PRINT NAME:	
REVISION:	-						SIGNATURE:	
CREATED:	1.1.20						DATE:	
DRAWN BY:	TECHNICAL DEPARTMENT	PAPER SIZE						
DWG SCALE(S):	NTS							
COLOUR / FINISH REF:	WHITE CRAFT PAPER / LAMINATE (HPL)	PROJECTION THIRD ANGLE	COPYRIGHT © 2020 ALL RIGHTS RESERVED - THIS DRAWING IS STRICTLY THE PROPERTY OF PENDOCK - (TP MANUFACTURING LTD)					

PENDOCK
THE CASING & ENCLOSURE SPECIALIST
 HALESFIELD 19
 TELFORD
 SHROPSHIRE TF7 4QT
 (t) 01952 580590 (f) 01952 587805
 sales@pendock.co.uk
 www.pendock.co.uk